



ASELight Street 120 LED street light

The intelligently controlled LED street light with "light on demand" technology reduces energy requirements by 90%. Welcome to the age of ASELight.

asetronics 
Milestones in lighting technology

ASELight Street, the LED street light of the future

With the ASELight Street, customers and operators receive a universal LED street light that meets all the requirements of a modern, efficient and low-maintenance light, for both urban and rural areas. Regardless of the street layout – flexible mounting versions ensure a uniform lighting solution as an attachment luminaire or mounted luminaire.

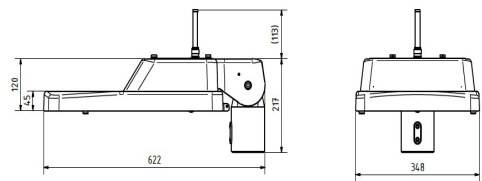
The intelligent control system with "light on demand" technology is achieved by means of a wireless network via the built-in antenna (no cable-connected system) in the luminaire. Thanks to the integrated motion sensor, the light can be controlled in an event-driven way, resulting in energy savings of up to 90% compared to inefficient old systems.

The high energy efficiency, modular design, optimised thermal management and serviceability make the ASELight Street a long-lasting investment with low life cycle costs.

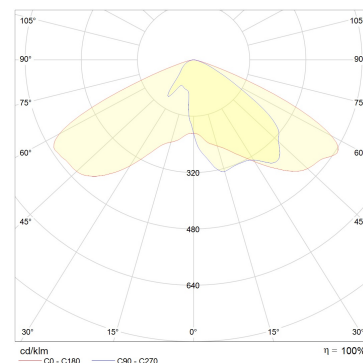
Technical data:

Light name:	ASELight Street 120
Housing: coating	Aluminium die casting powder (RAL9006)
Power consumption:	Typically 124.1 W
Power reduction:	Yes (dimnable using light on demand technology from 0 - 100%)
Electrical connection:	3 x 1.5 mm ² for clamp connection
LED module:	4-piece (56 LED)
Luminous flux:	14,327 lm
Light yield:	115.4 lm/W
Colour reproduction (CRI):	≥ 80
Light colour:	4,000 K (neutral white)
LED durability: (L80B10)	100,000h
Protection class:	SKI or optionally SKIII
Protection type:	IP66
Weight:	13 kg
Pole connection:	Cable ground: 76 mm, 60 mm, 46 mm and 42 mm
Incline adjustment:	Attachment luminaire: +70° /-16° Mounted luminaire: +10° / -70°
Maintenance:	Can be opened without using tools
Mounting heights	7 to 14 m
Certification marks:	CE + ENEC

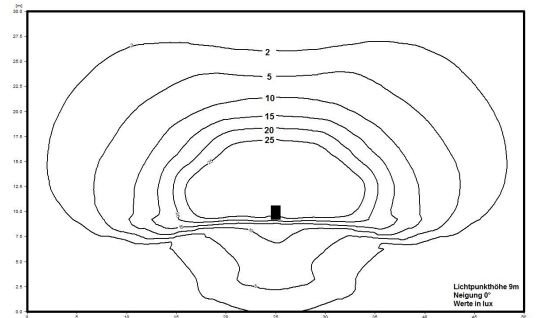
Dimensions



Polar diagram



Illumination



Light on demand function!
Light only when it is really needed – and only then!



- individual system configuration
- control on site or via gateway
- Sensors = active lighting
- System networking
- A carpet of light ahead of street users
- Light on demand



Asetronics AG

Freiburgstrasse 251
CH-3018 Bern

Tel.: +41 (0) 31 329 31 11

Fax: +41 (0) 31 329 31 99

E-mail: info@asetronics.ch

Internet: www.asetronics.ch